

MC800 GUIDE

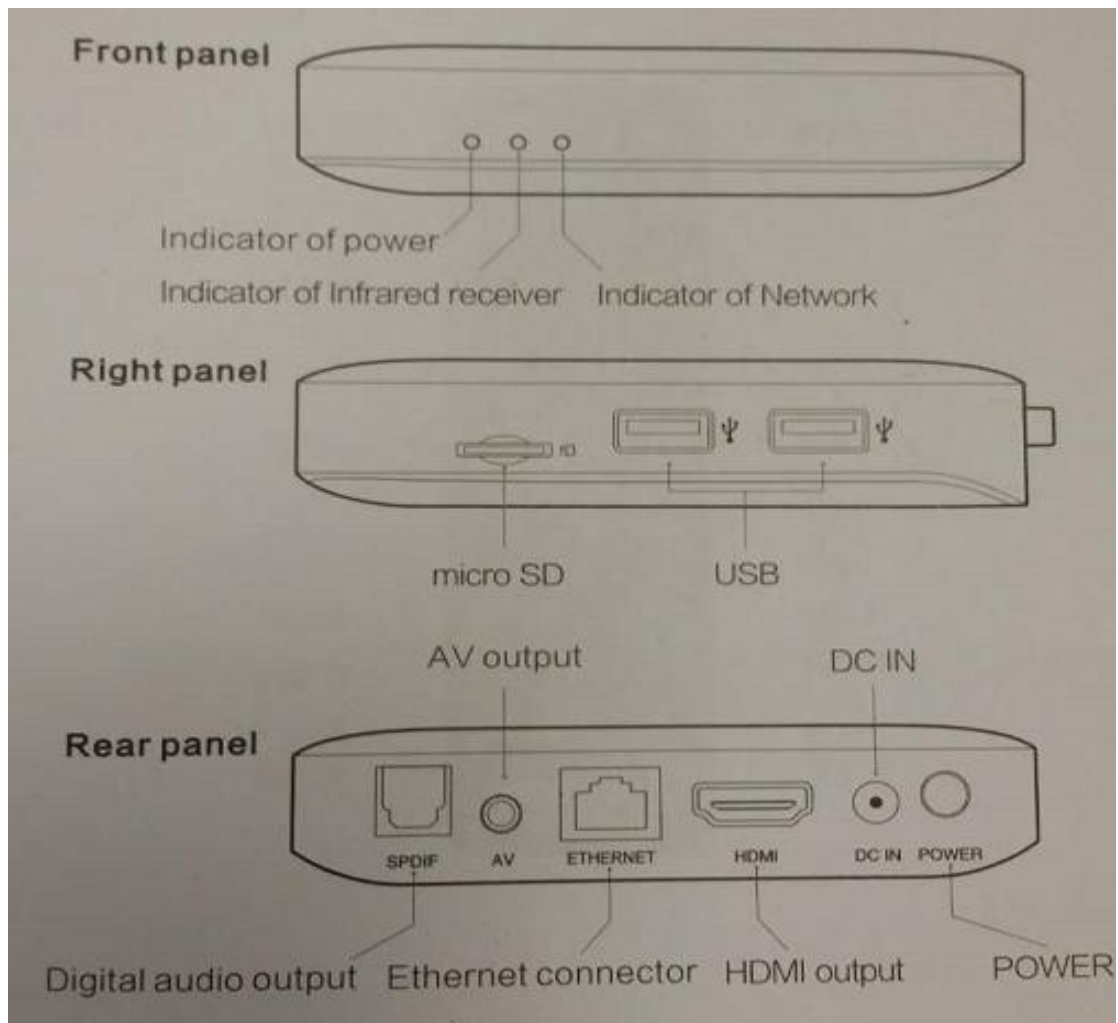
We are now pleased to introduce the Quad Core set top box MC800 with best picture quality and faster navigation.

It looks like

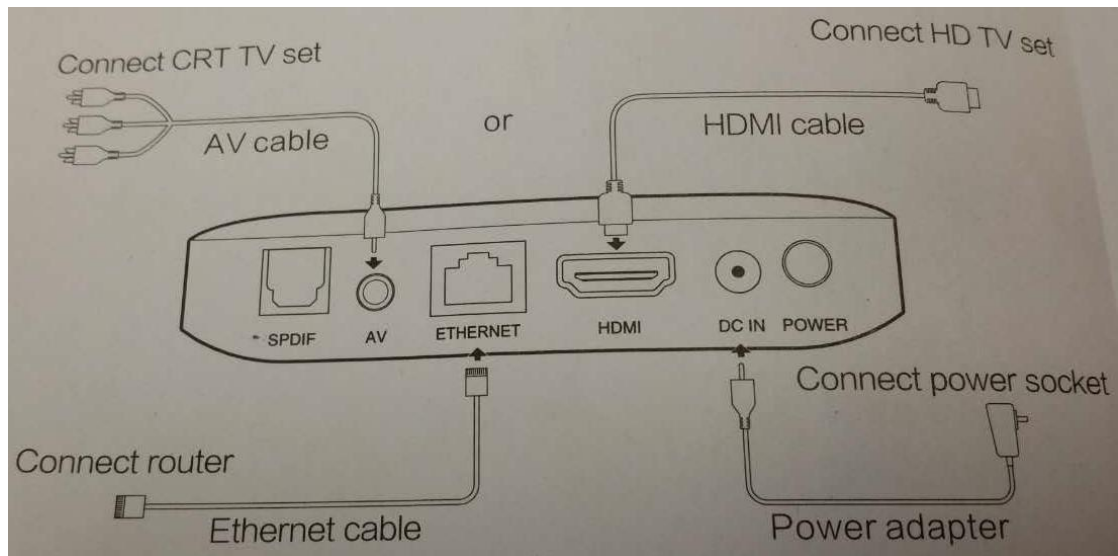
Front



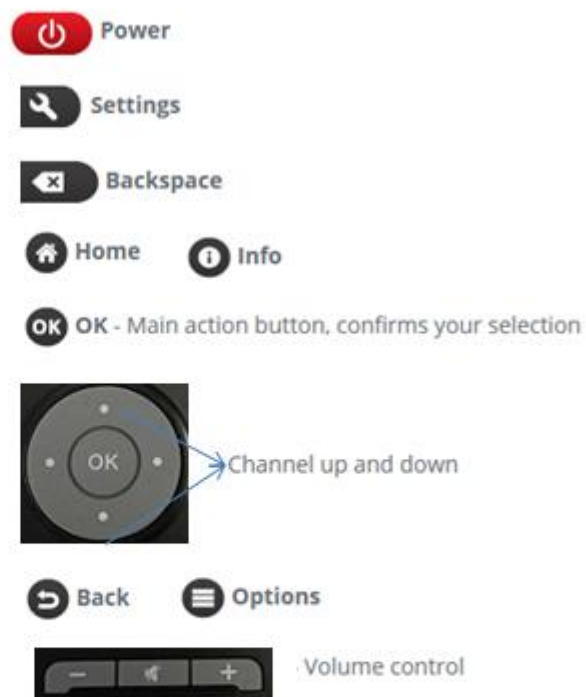
Back



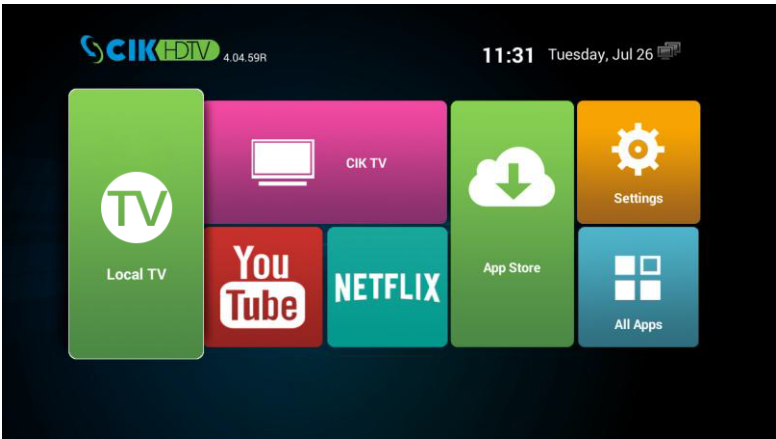
Connect TV Box



Remote Control



Main page



English



繁体中文



繁体中文

About Page



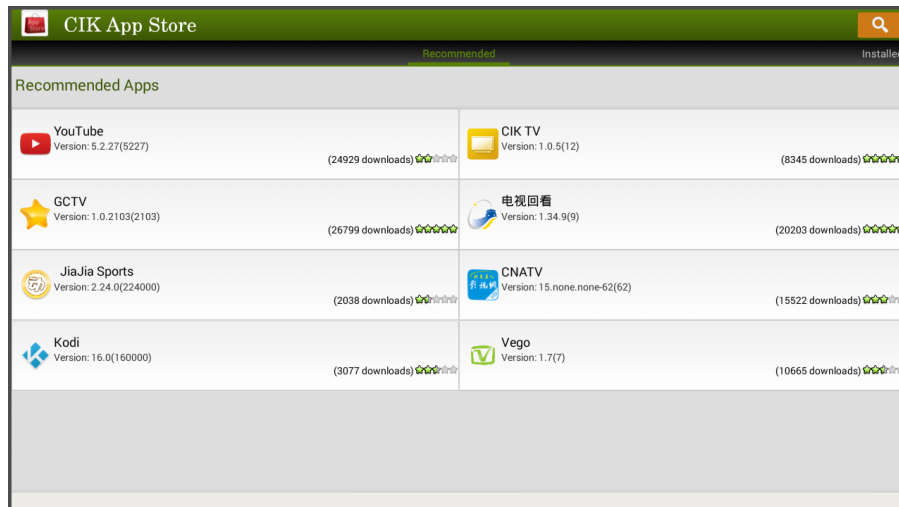
Setting Page



All apps Page



App store Page



How to do “Factory Reset”

If TV BOX can display Main page after power on, but it has some other issues, we can try “Factory Reset” to resolve issues.

This wipes saved user data, formats internal storage and resets TV BOX to factory settings. The firmware version will keep same as before doing “Factory Reset”

Go to Settings → About Page, and choose “Factory reset”



How to do “HARD RESET”

If TV BOX can't work after power on, for example, freezing on the AD page, black screen with no signal. We can try "HARD RESET" way to resolve issue. After "HARD RESET", TV BOX will wipe user data, format internal storage and reset to factory firmware version (4.02)

1. Unplug the TV BOX from the power source or Press Power on/off button on the rear of TV box
2. Locate the small reset button on the back of the TV BOX, which is under the "R"



3. Press this reset button in using a pen or similar object and hold it
4. Connect the TV BOX to power while holding the reset button in
5. Wait until a green robot displayed on the screen then release





Power on/off Button

MC800 had a power on /off button which is beside power adapter port. User can easily cut the power of TV BOX by just press the Power on/off Button instead of plug in/out the power adapter.



Turn on/off TV box remotely

User can easily turn on/off TV BOX instead of press power button on TV BOX

1. Turn on TV BOX: Press  on Remote control when TV BOX is off status
2. Turn off TV BOX: Press  on Remote control, then choose "Power off"

